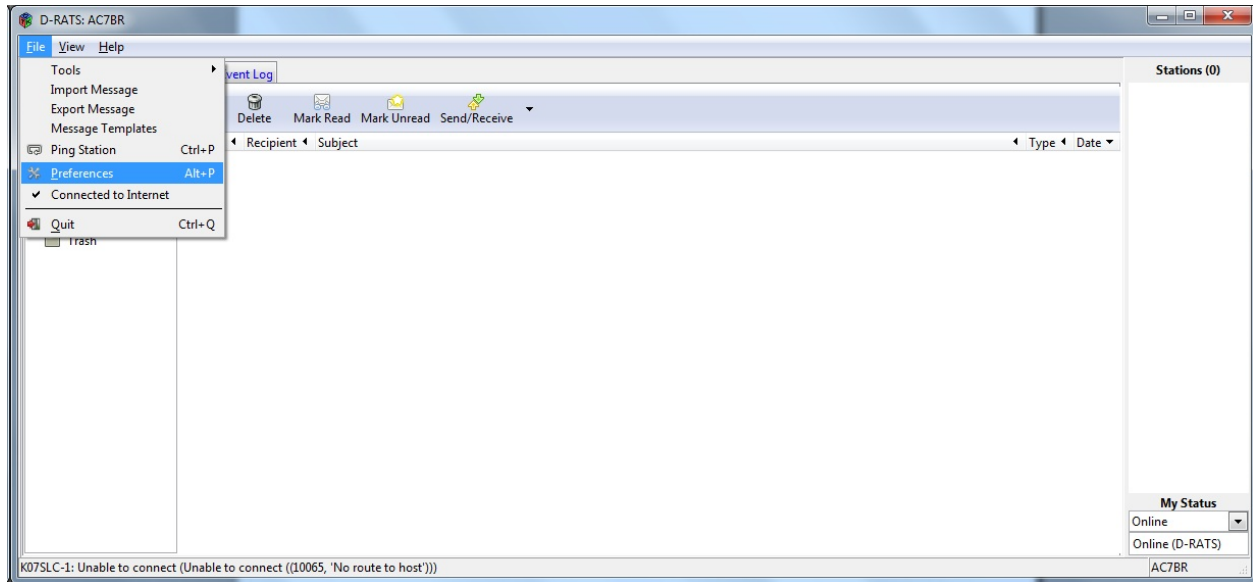


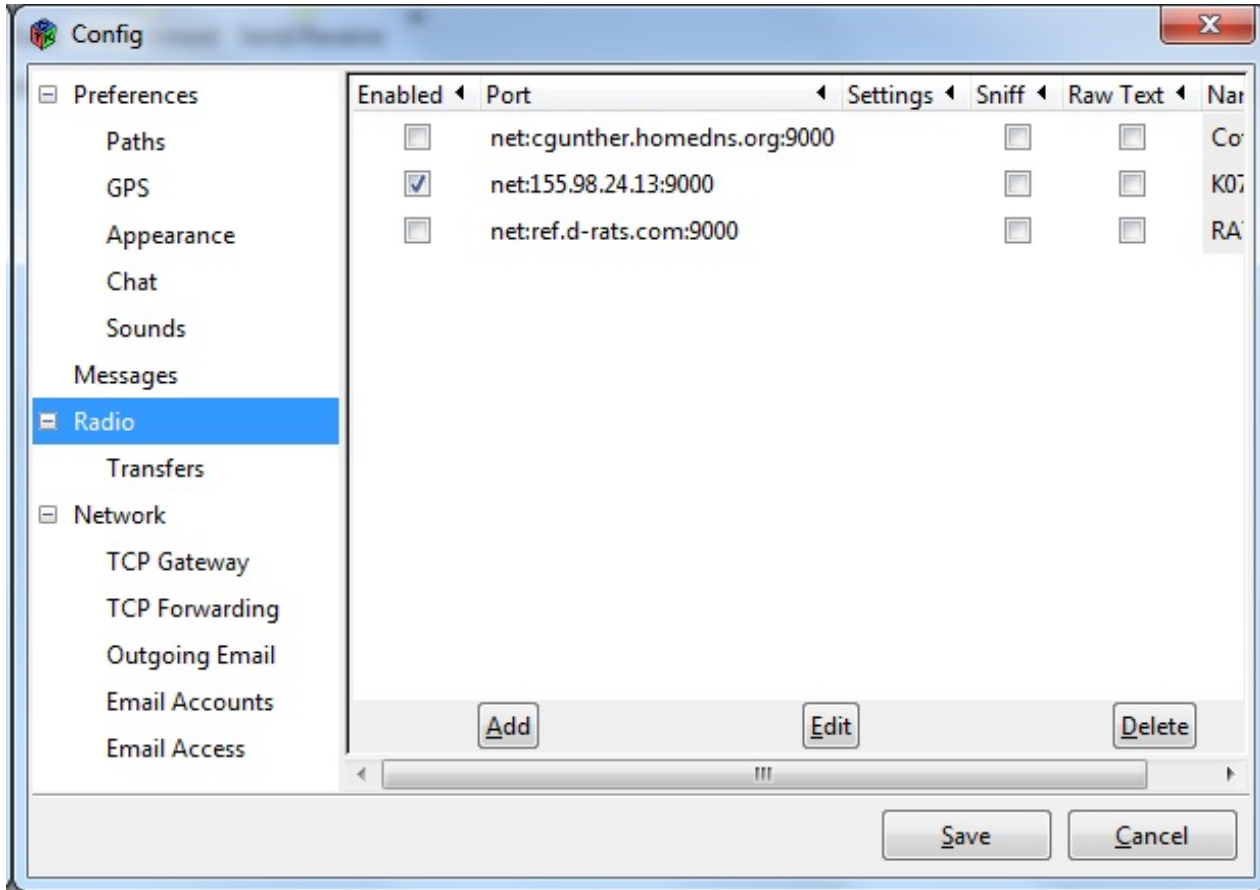
## Setting up DRATs for the Salt Lake County ARES Ratflector

The Salt Lake County ARES Ratflector can be found on the Internet at IP address 155.98.24.13, port 9000. To configure DRATS, follow the steps below.

Click on the File menu and choose Preferences.



In the Preferences dialog, choose Radio.



Click on the Add button and enter the following information:

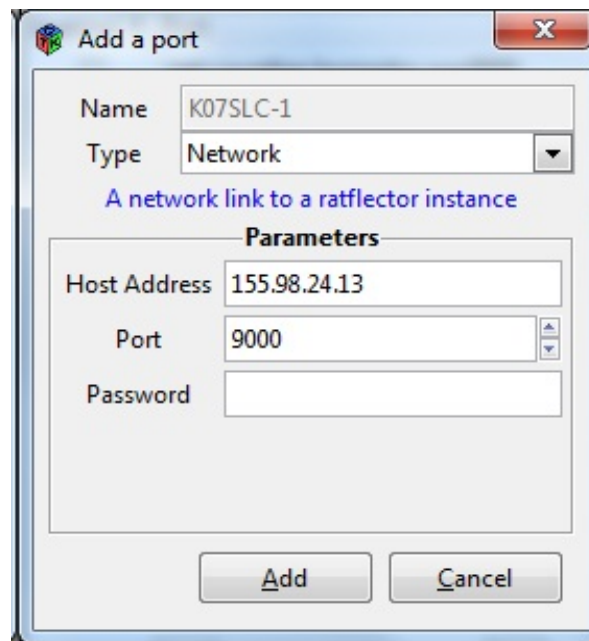
Name: KO7SLC-1

Type: Network

Host Address: 155.98.24.13

Port: 9000

Password: None, leave blank



The image shows a Windows-style dialog box titled "Add a port". The dialog contains the following fields and controls:

- Name:** Text box containing "KO7SLC-1".
- Type:** Dropdown menu set to "Network".
- Note:** "A network link to a rafflektor instance" (text in blue).
- Parameters section:**
  - Host Address:** Text box containing "155.98.24.13".
  - Port:** Spin box containing "9000".
  - Password:** Empty text box.
- Buttons:** "Add" and "Cancel" buttons at the bottom.

Finally, click on the Add button to add the Salt Lake County ARES Rafflektor (port). In the Preferences dialog make sure the new Rafflektor (port) is enabled and then click the Save button.

You should now be connected to the Salt Lake County ARES Rafflektor.